

SUPERIOR SPIRAL STAIRS

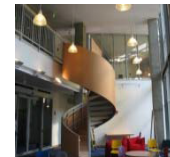
DESIGNS IN METAL & WOOD

RAIL SAMPLES

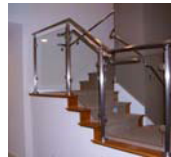
Baluster Railings (See Baluster Page)



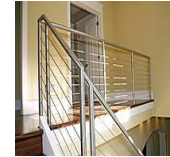
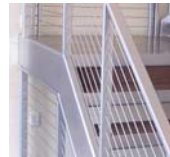
Solid Panel



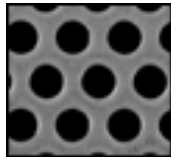
Glass Railing



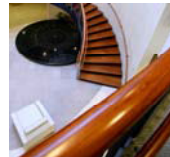
Cable Railing



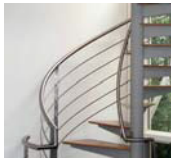
Perforated Panels



Wood Top & Grab Rails



Multiline

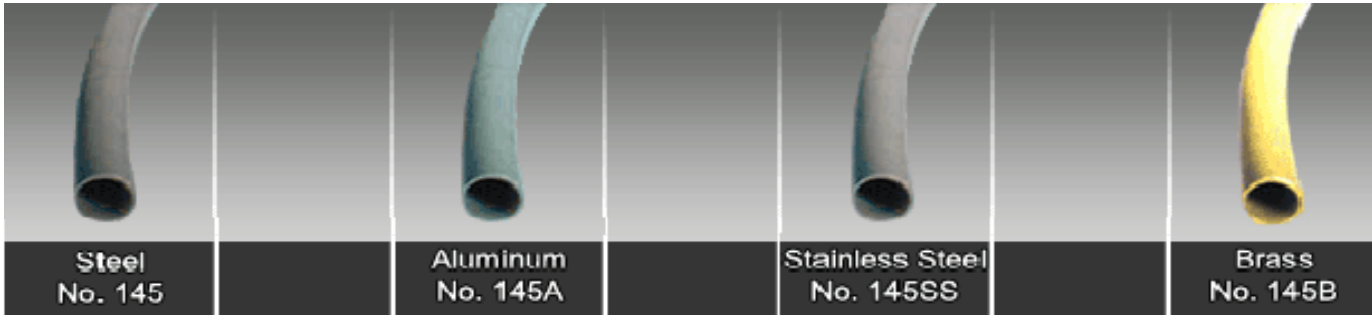


STANDARD TOP AND GRAB RAIL PROFILES

Pipe Rails

Steel and Aluminum spiral rails are continuous and cold formed to a perfect spiral.

Note: Custom pipe sizes are available.

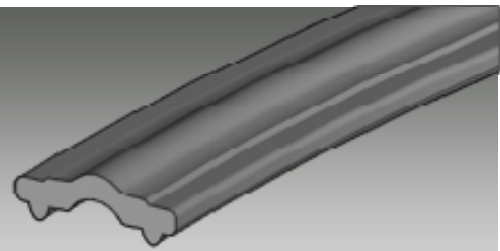
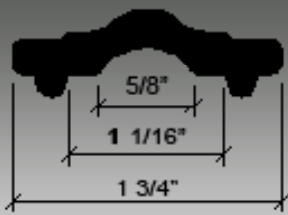


Standard Sizes Available:

1 5/16" OD (1" Sch 40 Pipe)	1 5/8" OD (1 1/4" Sch 40 Pipe)	1.9" OD (1 1/2" Sch 40 Pipe)
--------------------------------	-----------------------------------	---------------------------------

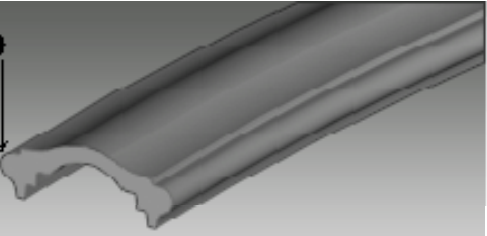
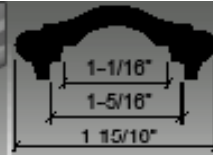
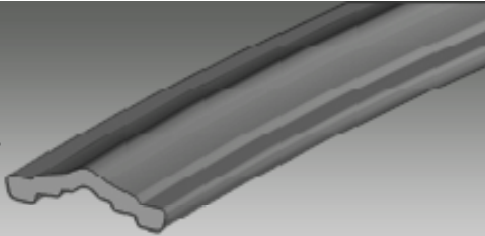
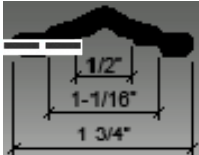
Steel Profile Rail Designs

Perfect for church rail and able to attach to most rail ends.



No. 511

Steel Profile Matches: A, C, D, E, F, G, H, I, J, K

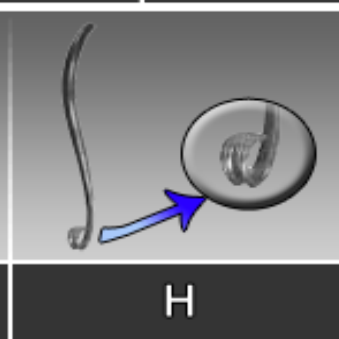
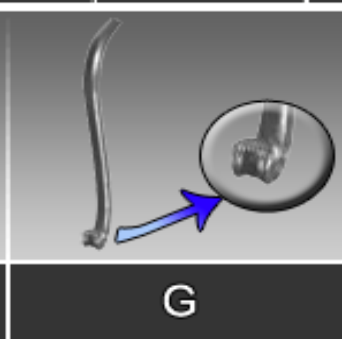
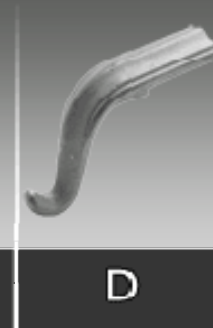
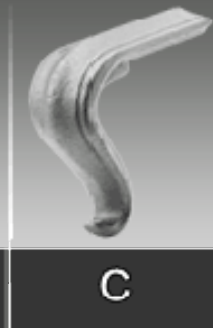


No. 512

Steel Profile matches: A, B, C, D

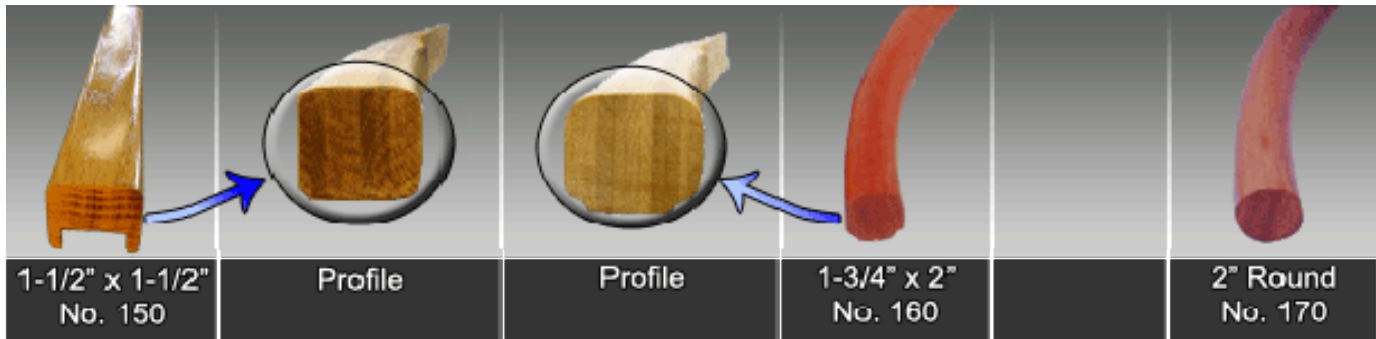
No. 513

Steel Profile matches: E, F, G, H, I, J, K



Standard Wood Rail Profiles

Standard Wood is American Birch.
Note: Custom profiles are available.



Wood Railing Swatches

